



FirstNet™

PSAC Briefing on Outreach and Consultation

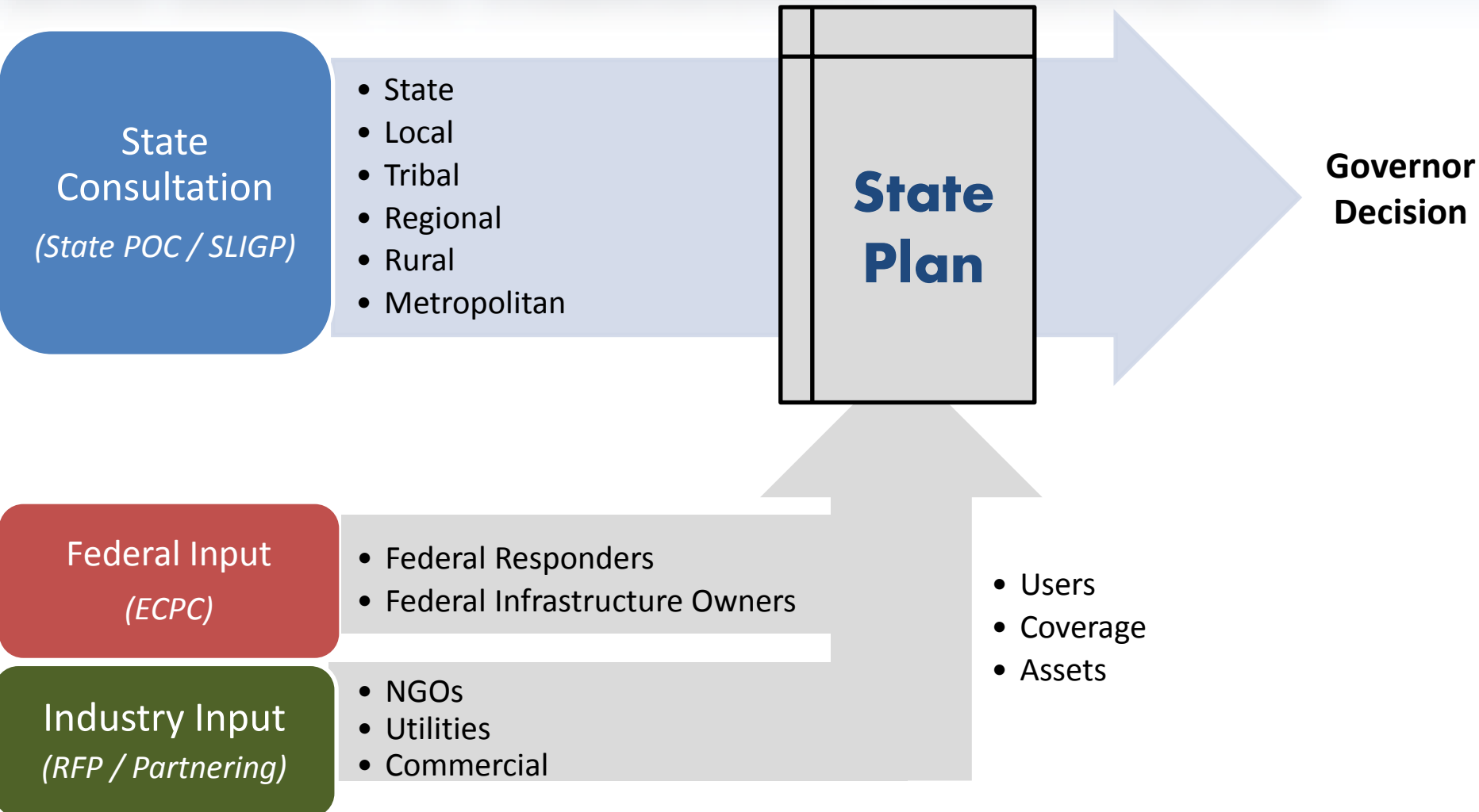


TJ Kennedy

FirstNet, Deputy General Manager

December 10, 2013

WIDE RANGE OF STAKEHOLDER CONSULTATION



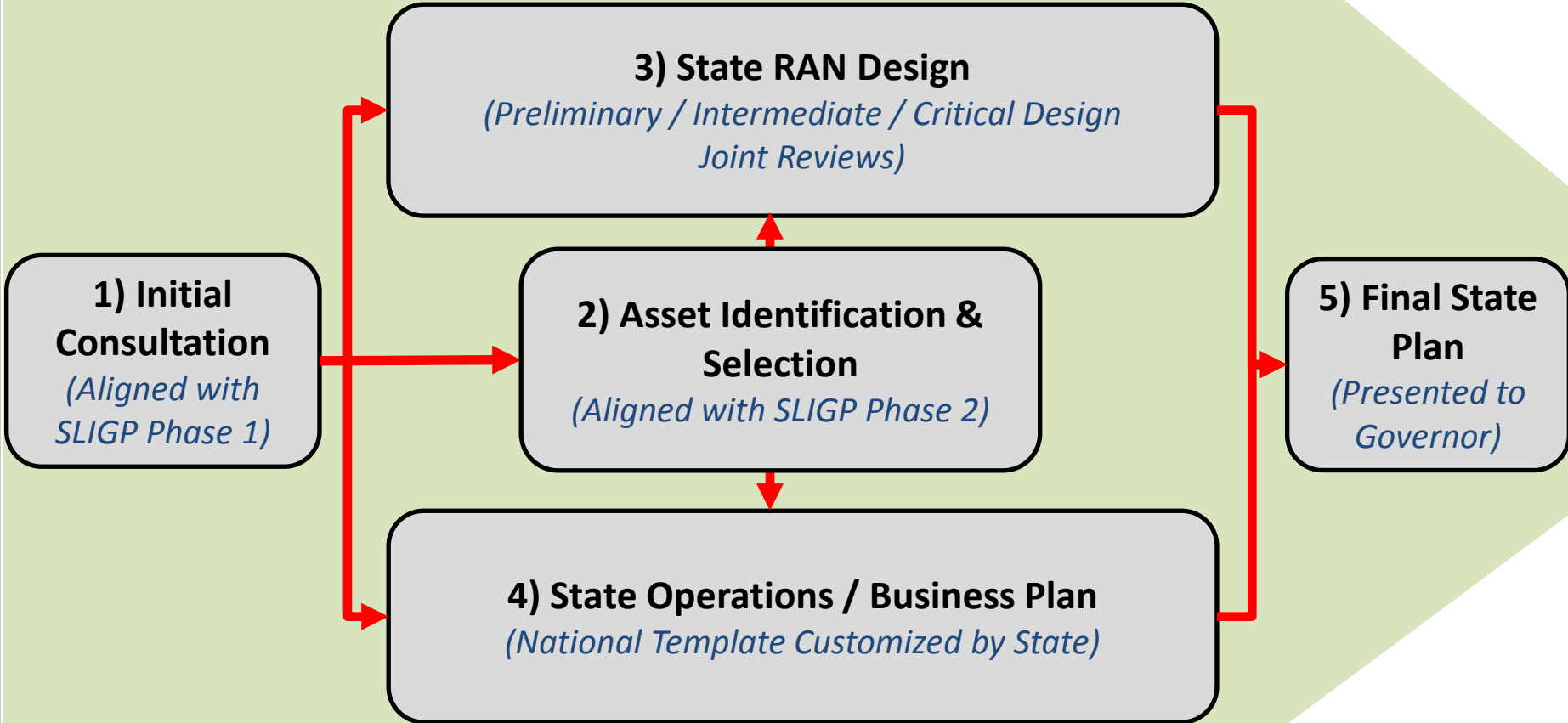
OVERVIEW OF CONSULTATION PROCESS

- **Consultation is an active process, not a single event.** FirstNet will collaborate and partner with stakeholders in a meaningful consultation process.
- **FirstNet will communicate the consultation process and necessary roles and responsibilities.** It will be clear to the stakeholders what the process is and what the expectations are for those involved.
- **Consultation will focus only on critical information and data.** FirstNet will focus on gathering only absolutely necessary data to help build the network.
- **Plan development will be iterative.** Stakeholders and FirstNet will have the opportunity to refine information and improve drafts.
- **Consultation culminates with the creation of the State Plan.** State Plans will be created with the information gathered during the consultation process.

Together, Stakeholders and FirstNet will have engaged in a process that provides meaningful and thorough information for the State Plans.

DEFINING THE PROCESS

Consultation



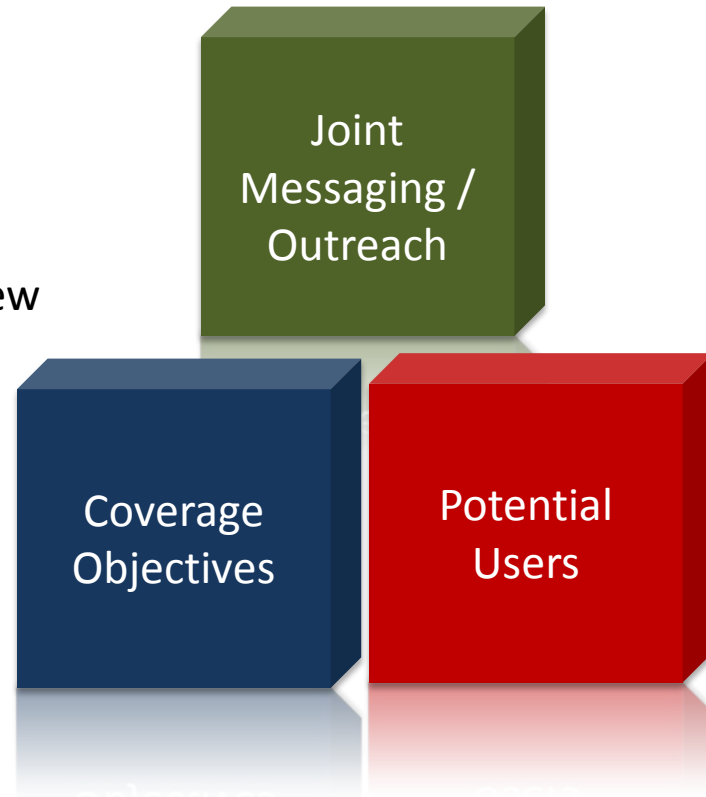
1 - INITIAL CONSULTATION *(Aligned with SLIGP Phase 1)*

Key Steps

- Define consultation process & roles / responsibilities
- Discuss Baseline State Analysis (BSA) with each State / Territory
- States validate / improve BSA coverage objectives and detailed user information
- Upon completion by State, hold on-site meeting to review state analysis and discuss joint education / outreach

Guiding Principle

- Coverage objectives and user information is critical to support the State RAN design efforts
- All States may begin process concurrently
- Ask States to validate & enhance rather than recreate
- Address plan for joint messaging / outreach process and materials to stakeholders at all levels



BASELINE STATE ANALYSIS – Getting Ready for Consultation

Prior to any in-person consultation, FirstNet will provide SPOCs with key information and materials to prepare States for consultation. This information will come in the form of a Baseline State Analysis (BSA). This BSA includes:

of Oregon



Baseline



- 1 FirstNet Update
- 2 State Plan Process & Roles
- 3. Coverage Baseline
- 4. User Baseline
- 5 Outreach Materials

Updated information on FirstNet progress to date

High level process flow for State Plan development including roles and responsibilities of stakeholders and FirstNet

FirstNet’s preliminary coverage objective map for the State as well as instructions for update/enhancement by the State

FirstNet collected information on primary responders in the State for verification, as well as categories for estimated numbers of potential secondary users

FirstNet developed materials that can be used/customized by the State to support outreach activities



Getting States Ready for Consultation (Cont.)

- States will review and validate the coverage and user information in their BSA.
 - Where appropriate, information about coverage/users for Tribal and Federal entities will be considered.
- FirstNet will send Baseline State Assessments (BSA) sent to all 56 States/Territories at the same time.
- Consultation meetings will occur after States have validated their BSAs and the SPOCs indicate that they are ready to begin.

This process will begin with heavy communication to States about process, roles, and responsibilities, and will ask States to validate and enhance existing information, not recreate.

Getting States Ready for Consultation (Cont.)



Consultation Readiness Checklist – FirstNet has a checklist for SPOCs to use prior to consultation. This checklist includes topics and items, which are consistent with deliverables required by SLIGP. Examples of Consultation checklist items include:

Governance:

- Functioning Governance Body in place
- Date/Time of next Governance Body meeting
- Formal relationships documented with Tribes in their State

Assessment and Validation:

- User agencies identified
- Secondary users identified
- Key stakeholders with assets that could assist with network build out identified.

Outreach and Education:

- Statewide Outreach Plan created
- Large metropolitan area contact list built
- Tribe contact list built
- Rural contact list built
- Established email list for all PS leadership in State
- Calendar of existing PS association events in state

OVERVIEW OF OUTREACH

FirstNet is increasing outreach to the States:

- **Conference Calls to Single Points of Contact.** FirstNet has begun monthly calls between FN outreach team and SPOCs.
- **Webinars for Single Points of Contact.** Quarterly webinars will be scheduled for FN leadership to engage directly with SPOCs.
- **Outreach Materials for Single Points of Contact.** FN is producing templates, talking points and fact sheets for states to use in their outreach programs.
- **Website.** This critical tool will contain valuable information for stakeholders, including contact information for state points of contact (SPOCs).

The Promise of FirstNet

What is FirstNet?
FirstNet will be the first high-speed wireless, broadband data network dedicated to public safety. FirstNet will be a single, nationwide network that facilitates communication for public safety users during emergencies and on the job every day. Think of FirstNet as a bigger, more reliable, secure and resilient "wireless pipe". This new network will be public safety grade, providing access to applications and coverage where public safety needs it most.

What will be possible with FirstNet?
Initially FirstNet will be used to send data, video, images and text and make cellular-quality voice calls. Users will get fast access to information they need to meet their mission. Unlike commercial wireless networks, FirstNet will allow for priority access among public safety users. FirstNet will also give incident commanders and local officials control over the network so, for example, they can assign users and talk groups and determine who can access applications.

Why was FirstNet created?
After 9/11, the public safety community fought hard to build the 911 Commission's best standing recommendation and convince Congress that it needed a dedicated, reliable network to provide advanced data communications capabilities nationwide. During emergencies, public safety requires priority service and protection.

How will FirstNet benefit public safety?
Using FirstNet will improve situational awareness and decision-making. Just as smartphones have changed our personal lives, FirstNet devices and applications will ultimately change the way public safety operates. FirstNet will save time during emergencies when seconds count. FirstNet will save money for states by leveraging nationwide purchasing power and scale economies. Using FirstNet can help save lives, solve crimes and keep our communities and emergency responders safer.

How will states and agencies participate in the buildout of FirstNet?
To make FirstNet a nationwide network, all states must have a local radio access network (RAN) that connects to the FirstNet core. FirstNet is responsible for working through the integrated state point of contact to consult with states, local communities, tribal governments and first responders to gather requirements for developing an RAN deployment plan. If the FirstNet plan is accepted by a state, FirstNet will connect the RAN to a core network to build its own RAN, but states must secure FCC approval and may seek funding support from NIA. State-built RANs must meet FirstNet security, hardening and interoperability requirements.

What will users pay for FirstNet services?
FirstNet intends to offer services at a competitive and competitive cost to attract millions of public safety users and make FirstNet self-sustaining. The use of FirstNet services and applications will be voluntary. The costs for FirstNet services and devices have not yet been set.

WIRELESS BROADBAND,
DEDICATED TO PUBLIC SAFETY

OVERVIEW OF OUTREACH (Cont.)

FirstNet is increasing outreach to the States (Cont.):

- **Outreach and Coordination with SLIGP.** FN will leverage SLIGP conference calls, workshops, and webinars to reach SPOCs and other State leaders.

FirstNet is increasing outreach to Tribal Communities:

- **Strategy Meeting.** In November, FN leadership met with a group of tribal representatives to discuss FN progress to date and the most effective ways to engage with the tribes as we move forward.
- **Communications Plan.** The FN outreach team is working with tribal representatives on strategy and messaging for optimal engagement, feedback and input from the tribes.

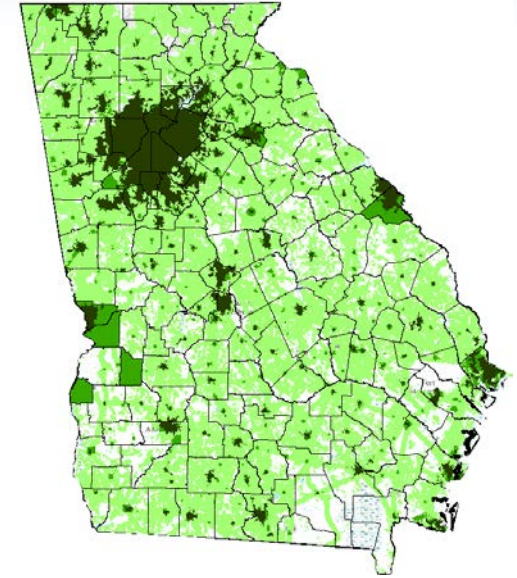
OVERVIEW OF OUTREACH (Cont.)

FirstNet is increasing outreach to Locals/Associations:

- **PSAC.** A FN outreach team member has been assigned to the PSAC as a resource and to assist PSAC members with FirstNet communications within their organizations.
- **Briefings for National Association Reps.** Quarterly briefings will be scheduled for FN leadership to engage directly with the Washington, DC-based representatives of national public safety associations.
- **Outreach.** The FN outreach team is reaching out individually to association staff points of contact to provide associations with a FirstNet outreach team member point of contact.
- **Events.** The FN outreach team has developed the 2014 association event calendar and is currently planning speaking engagements for FN leadership.

DEFINING COVERAGE OBJECTIVES

- FirstNet will provide a GIS map showing proposed coverage objectives in four major categories:
 - In Building
 - Handheld / Partial In-Building
 - Vehicular Modem / Partial Handheld
 - Satellite / Deployable
- States will provide updated coverage objectives through an updated GIS file
- States will be encouraged to gather input from all, local, state, and tribal agencies
- Voluntary OEC Coverage Workshops can help states get an early start and better understand this process
- Coverage objectives will be used to focus subsequent SLIGP Phase 2 data collection
- Parallel effort will occur with Federal agencies through federal outreach via ECPC

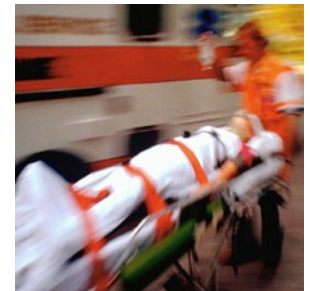


Coverage Baseline Example

- In-Building
- Handheld/Partial In-Building
- Vehicular Modem/ Partial handheld
- Satellite/Deployable

IDENTIFYING POTENTIAL USERS

- FirstNet will provide User baseline data (as available) for primary responders in each State to include:
 - Number of agencies by discipline
 - Number of personnel by discipline
 - Detailed agency user database
- FirstNet will also provide potential categories of secondary responders for consideration by the State with guidance provided from PSAC
- States will provide updated data on primary responders and estimated user counts for secondary responder groups whom they believe should be eligible users on the network
- Parallel effort will occur with Federal agencies through Federal Outreach via ECPC
- Voluntary OEC workshops will provide this baseline data as part of the delivery.
- Data will be used to support subsequent data collection during SLIGP phase 2, as well as inform capacity planning



2 - ASSET IDENTIFICATION & SELECTION

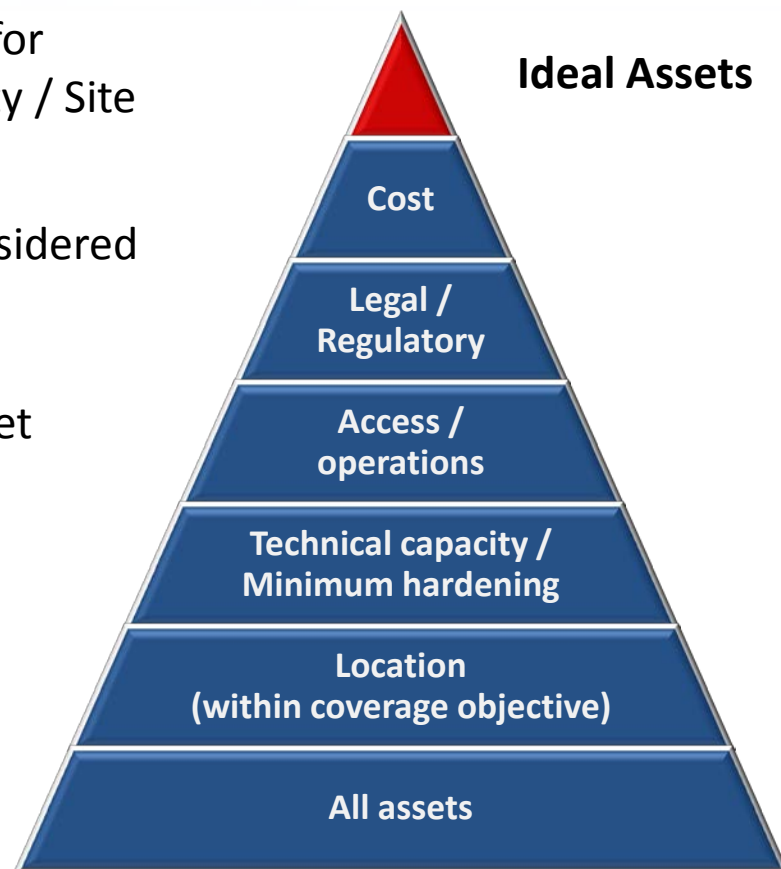
(Aligned with SLIGP Phase 2)

Key Steps

- Define minimum recommended attributes of assets for consideration (Coverage objective / Technical capacity / Site access / Operations / Low cost)
- Request data collection on available assets to be considered
- Assess all assets (commercial & public)
- Select assets based solely on best value to the FirstNet network

Guiding Principle

- Limit data collection to viable assets to save the State time/effort
- Leverage assets to provide better coverage at a lower cost
- Leverage assets to deploy quicker



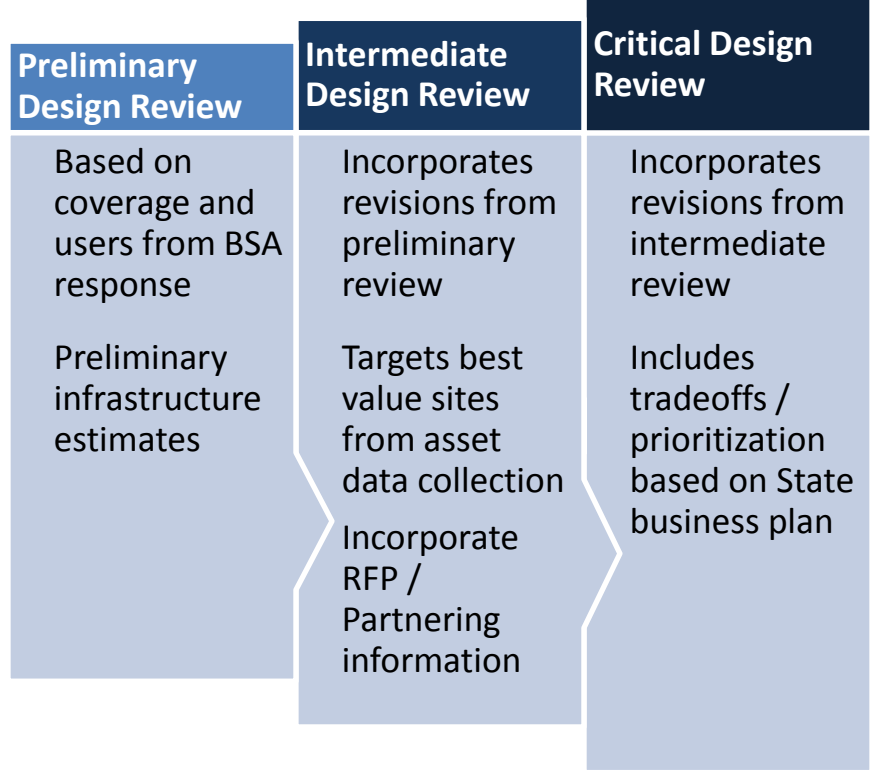
3 - STATE RAN DESIGN PROCESS

Key Steps

- Multi-phase (preliminary / intermediate / critical design reviews) review with State to refine design based on identified priorities
- Incorporate feedback and additional data as it is collected (SLIGP Phase 2 / RFP Process)

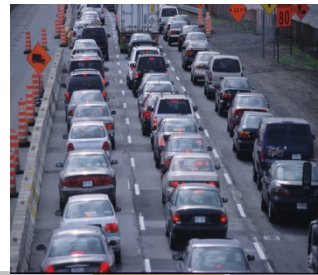
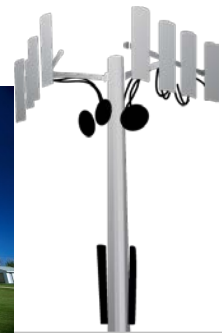
Guiding Principle

- Ensures on-going review / refinement process with State
- Jointly develop tradeoffs and priorities



GEOGRAPHIC COVERAGE PRIORITY

Multiple network coverage solutions operating across 5 distinct geographic categories



Wilderness
27% of U.S. Land Mass

Rural
68% of U.S. Land Mass

Suburban **Urban** **Dense Urban**
5% of U.S. Land Mass

4 - STATE OPERATIONS / BUSINESS PLAN

Key Steps

- Leverage PSAC and others to discuss overall approach to:
 - Local control
 - Prioritization
 - Training
 - Security
- Develop operations template with areas for input/customization
- Develop system cost structure / business plan for State based on preliminary RAN design and potential user base
- Customize based on public safety stakeholder input

Guiding Principle

- Addresses areas of consultation required by law
- Ensure State RAN design is informed by impact to business | cost considerations



5 - FINAL STATE PLAN REVIEW

Key Steps

- Combine State RAN Design with Operations / Business Plan
- Projected funding level
- Provide final review opportunity by State POC / Governing Body
- Submit to the Governor

Guiding Principle

- Addresses areas of consultation required by law
- Ensures Public Safety stakeholders have had robust involvement before State Plan is presented

State Plan Requirements

- Completion of the RFP process
- Details of proposed build-out in the State
- Funding level for the State



THANK YOU

www.firstnet.gov

